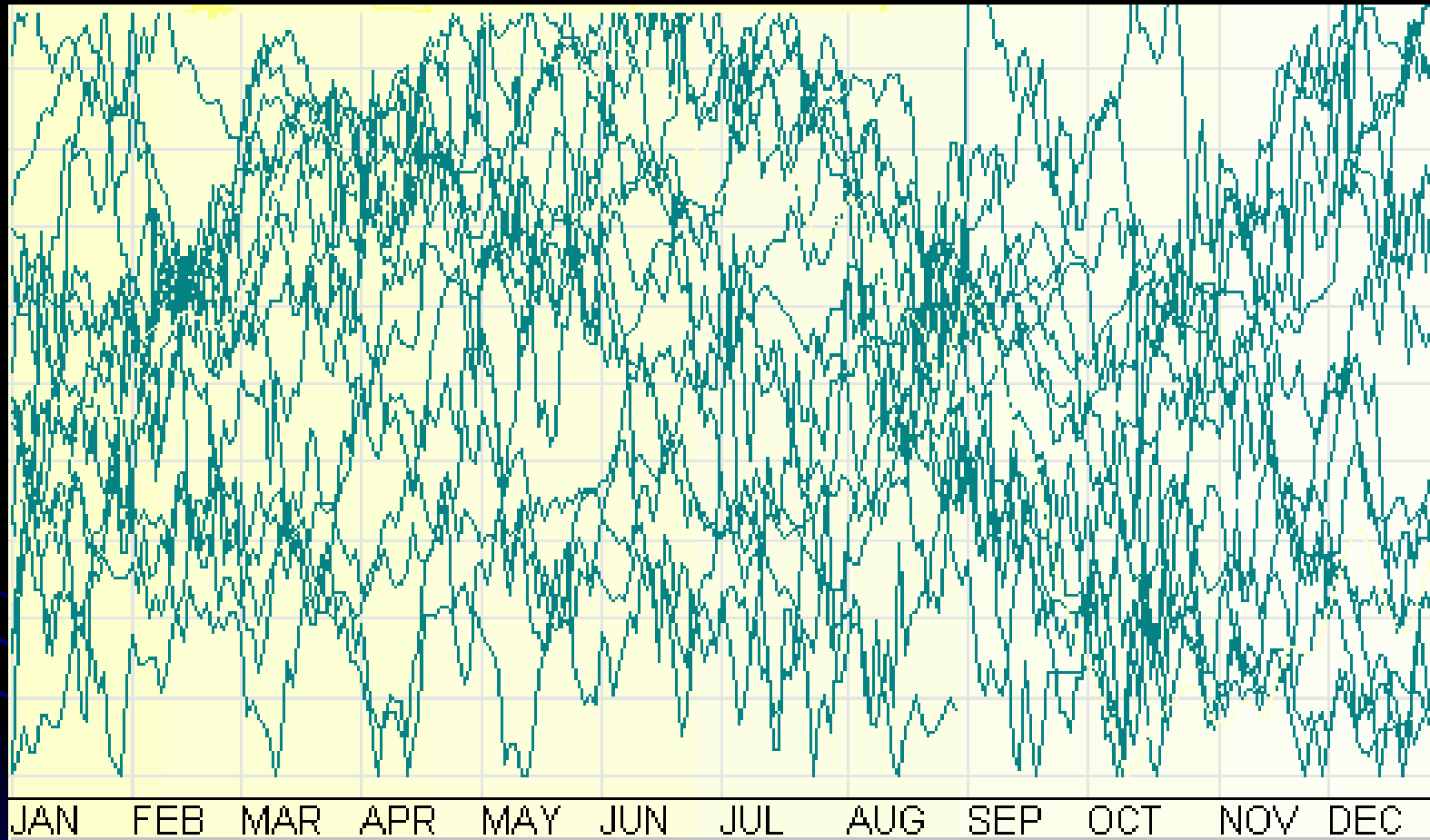


# Seasonality

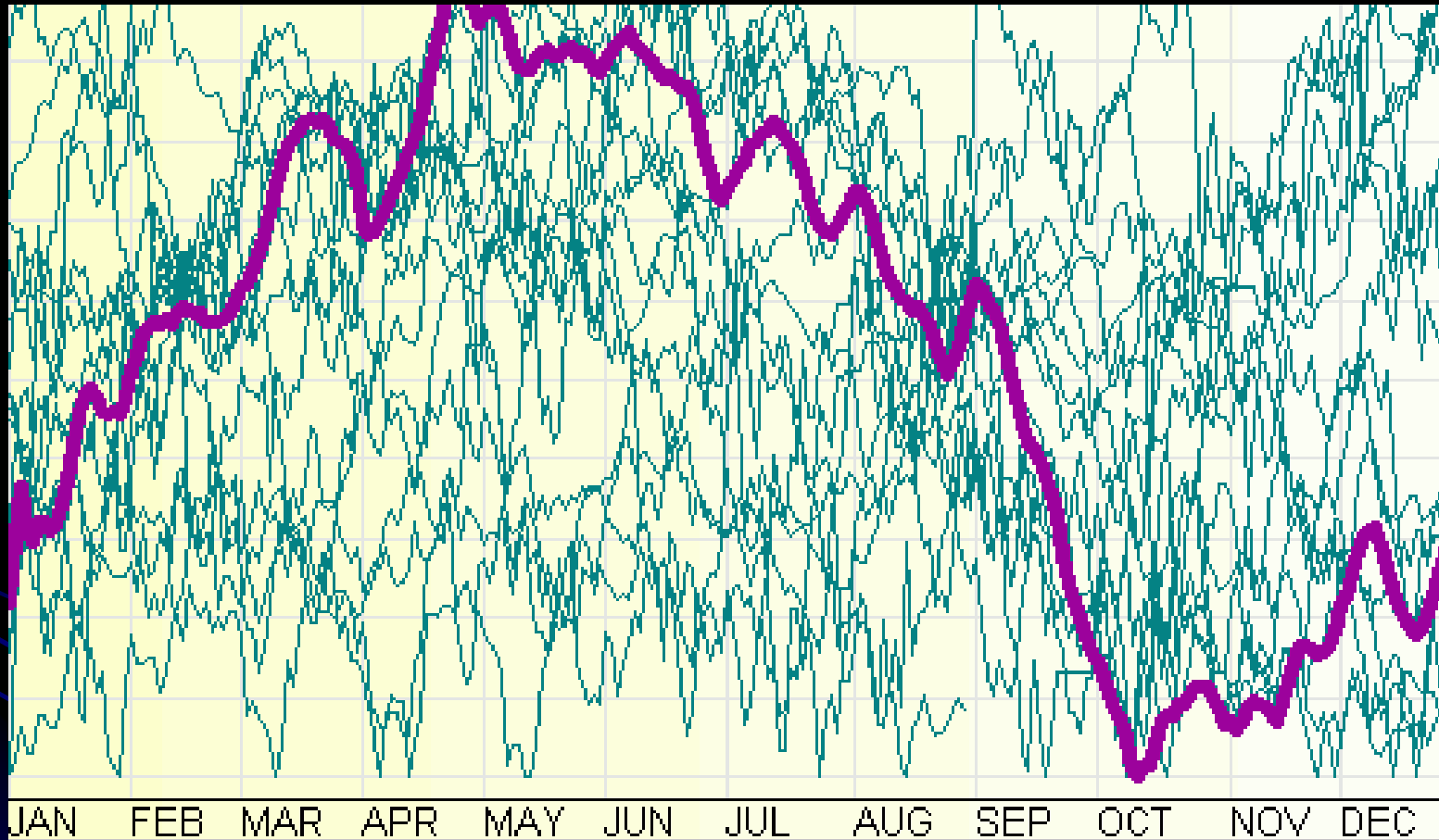
GM-General Motors Corp-Monthly



# Seasonality



# Seasonality



# Seasonality



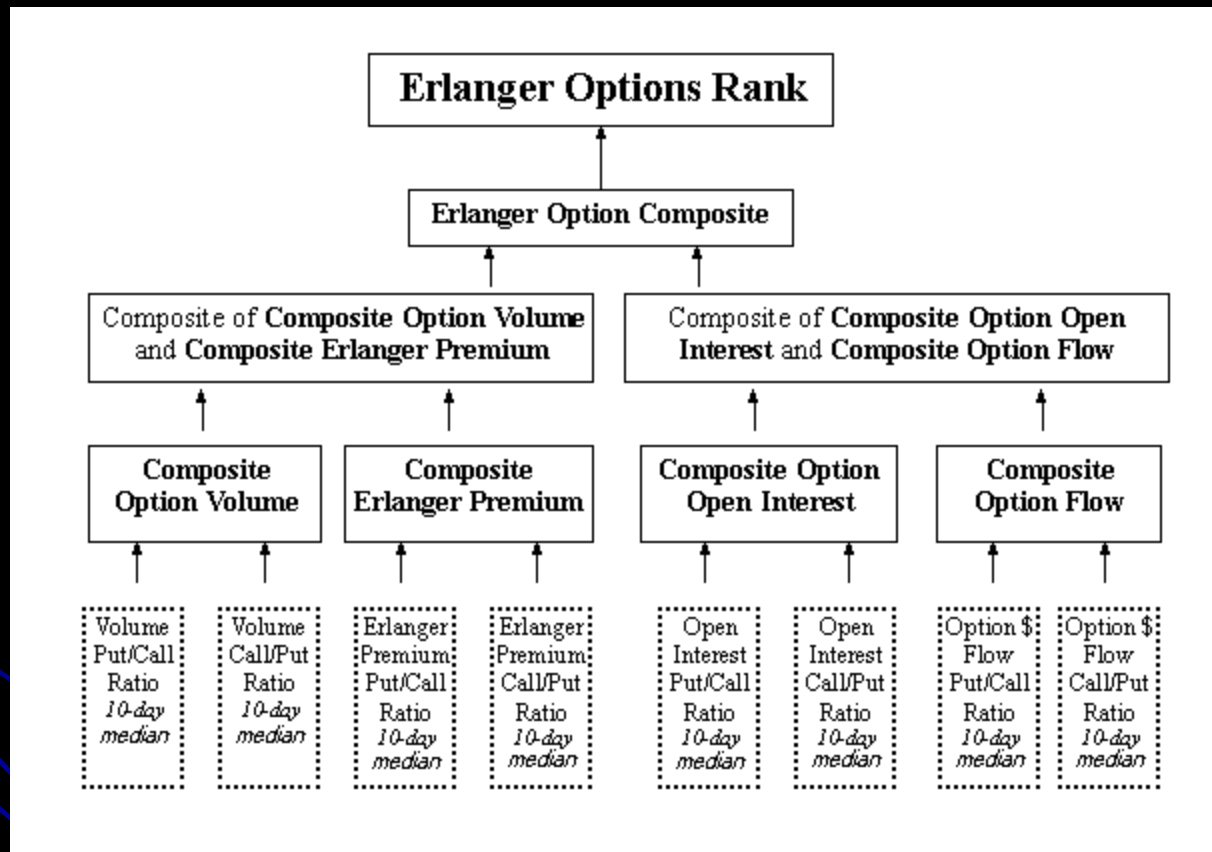
# Seasonality



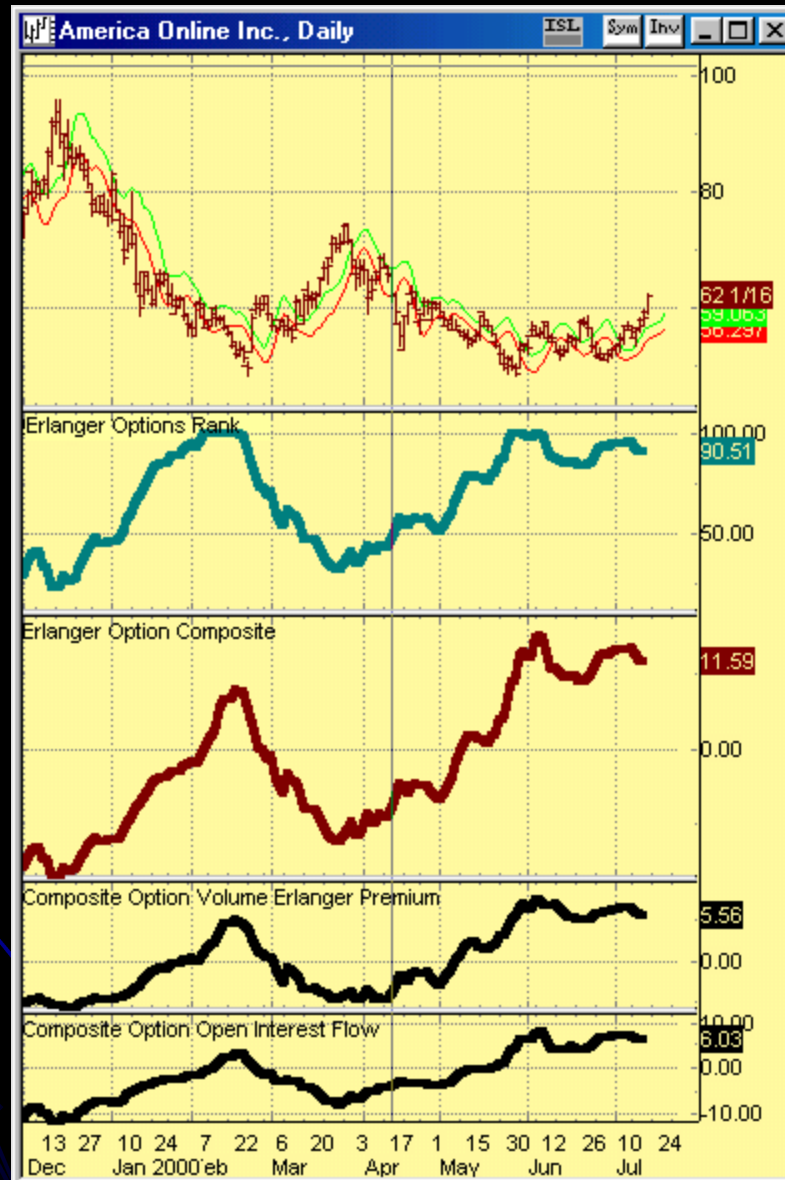
# Seasonality



# Erlanger Options Rank



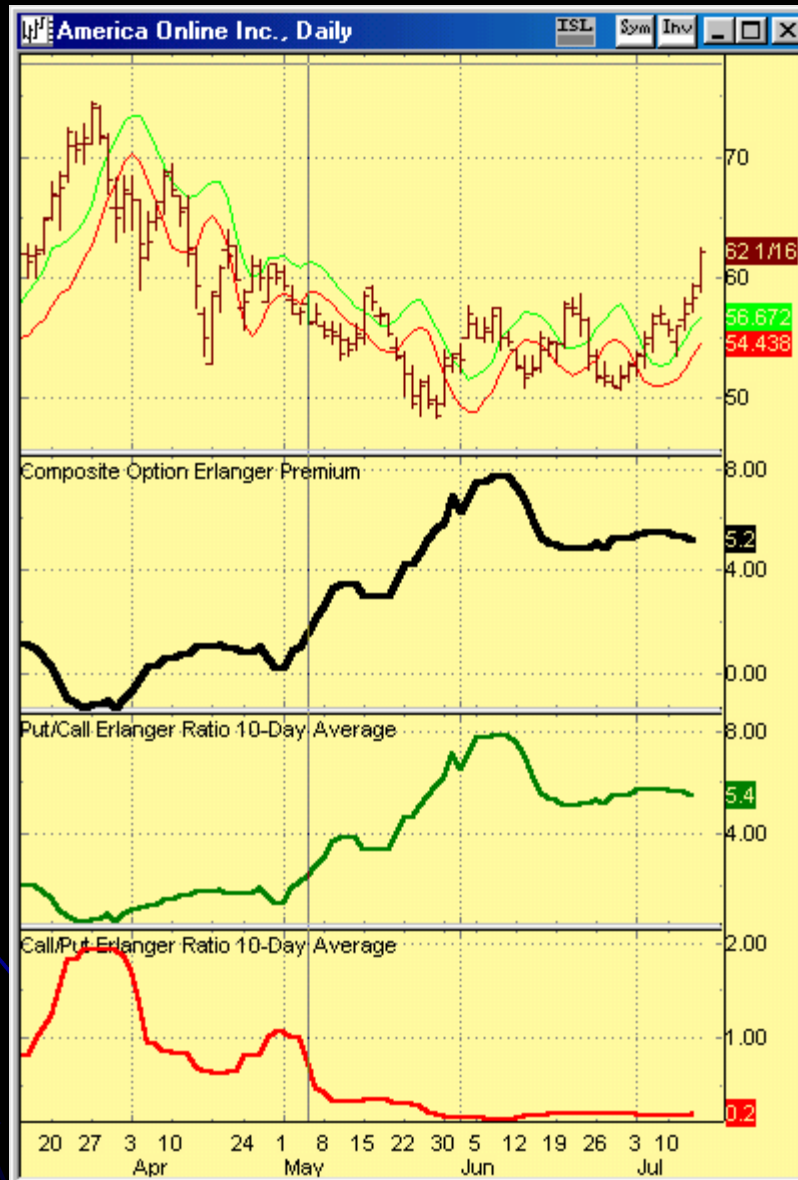
# Erlanger Options Rank



# Erlanger Options Rank



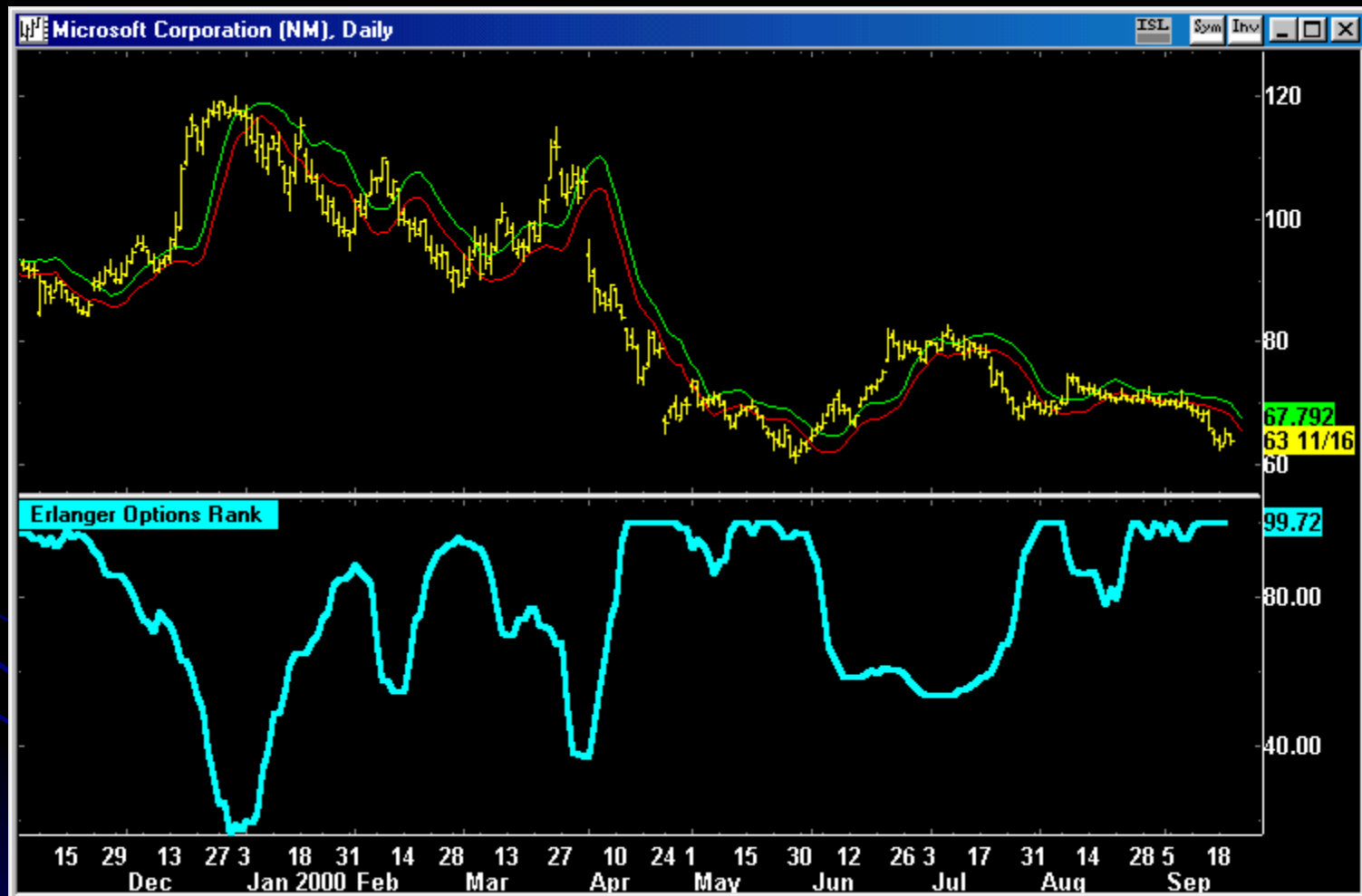
# Erlanger Options Rank



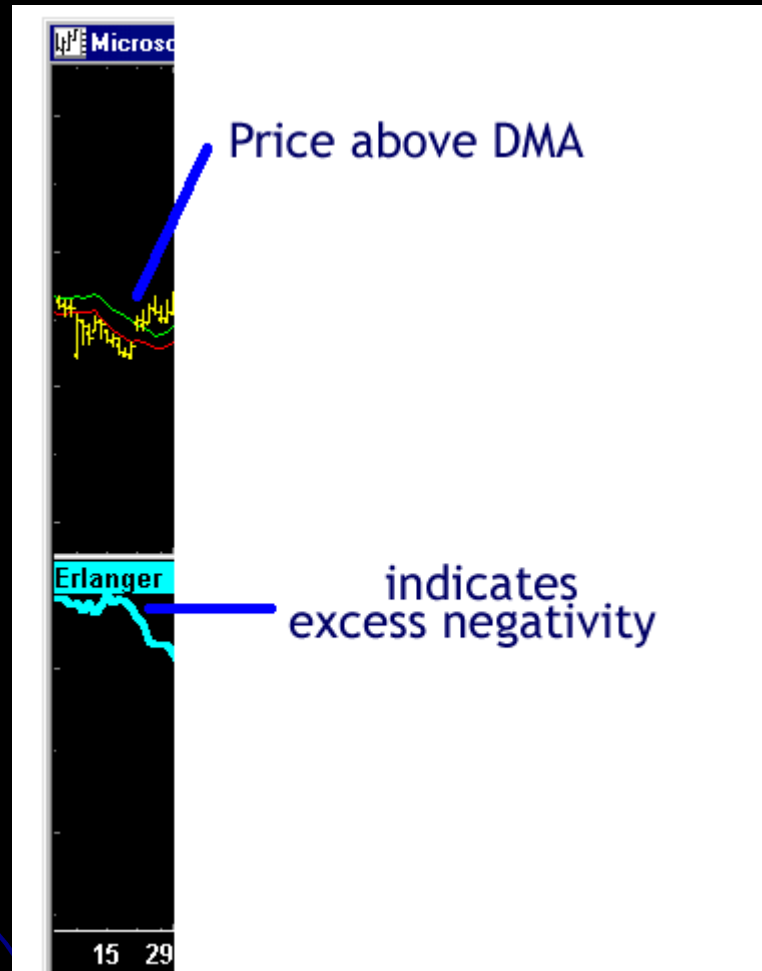
# Erlanger Options Rank



# Erlanger Options Rank



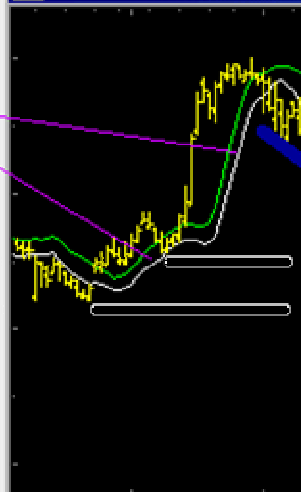
# Erlanger Options Rank



# Erlanger Options Rank

Note how the slope of the DMA channel reflects the power of the trend

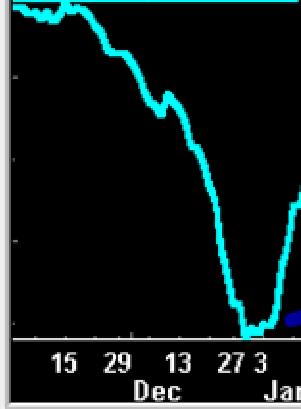
Microsoft Corporation



Price drops below DMA channel confirming the trend downturn

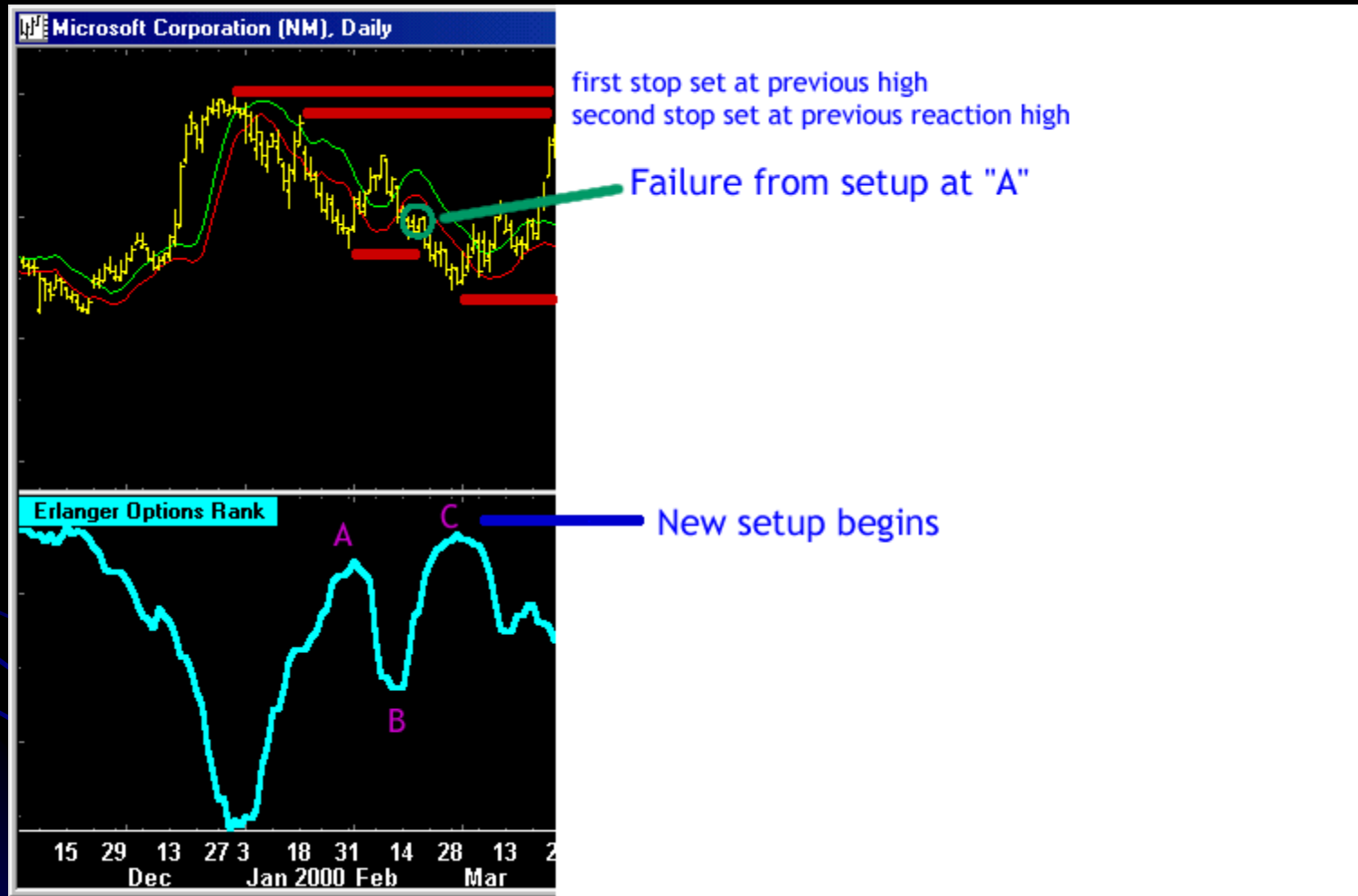
second stop set at secondary low  
first stop set at previous low

Erlanger Options Rank

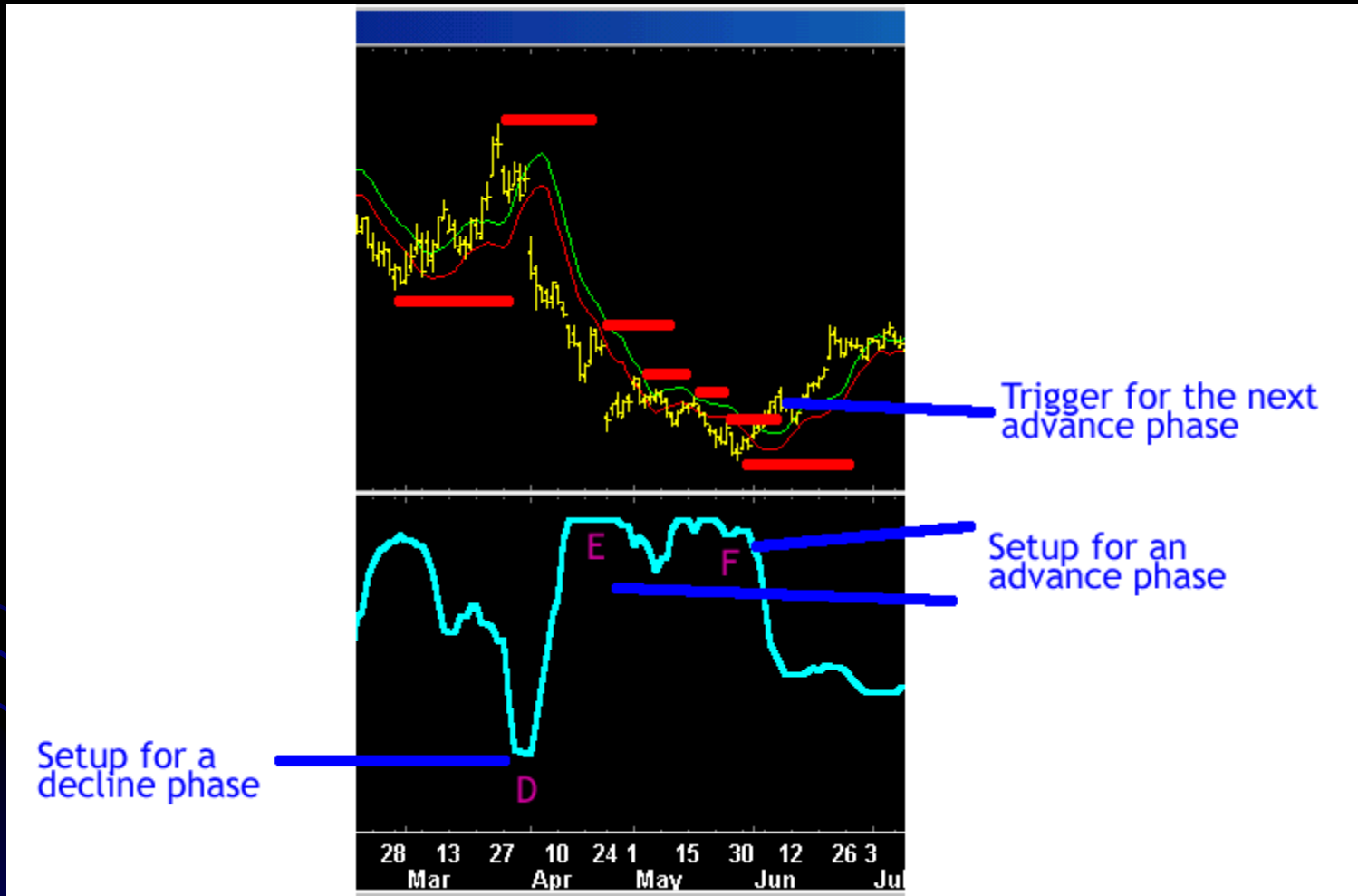


sets up a contrary move to the downside

# Erlanger Options Rank



# Erlanger Options Rank



# Erlanger Options Rank

DMA uncovers failure  
of advance phase  
anticipate by  
point "H"



# Erlanger Options Rank



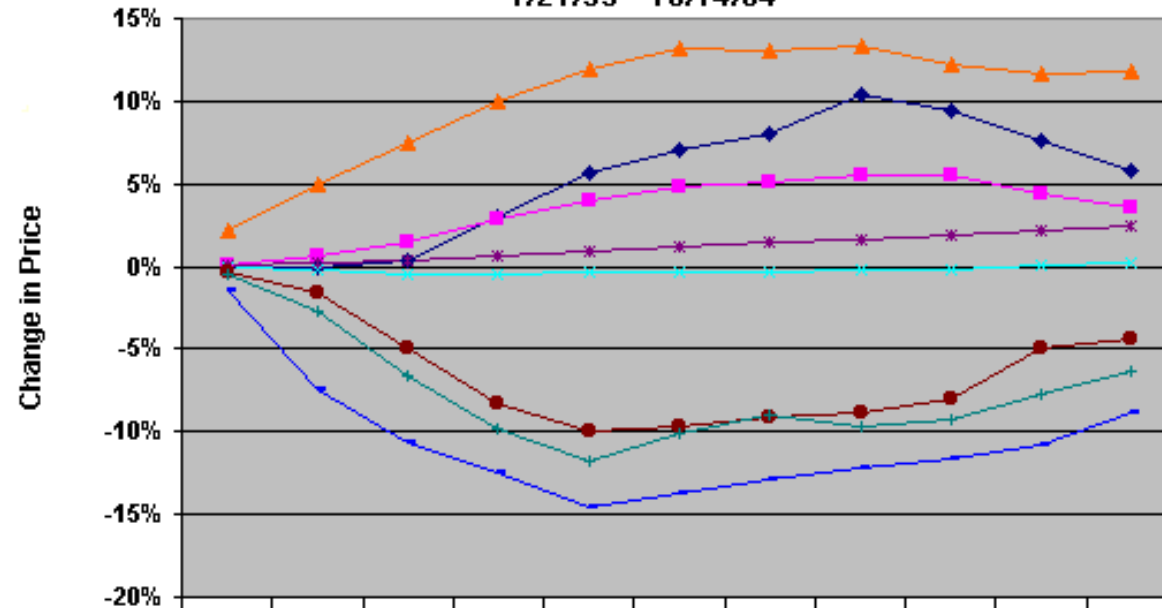
# Erlanger Options Rank



# Erlanger Options Rank

## MSFT Following Erlanger Options Rank

1/21/99 - 10/14/04



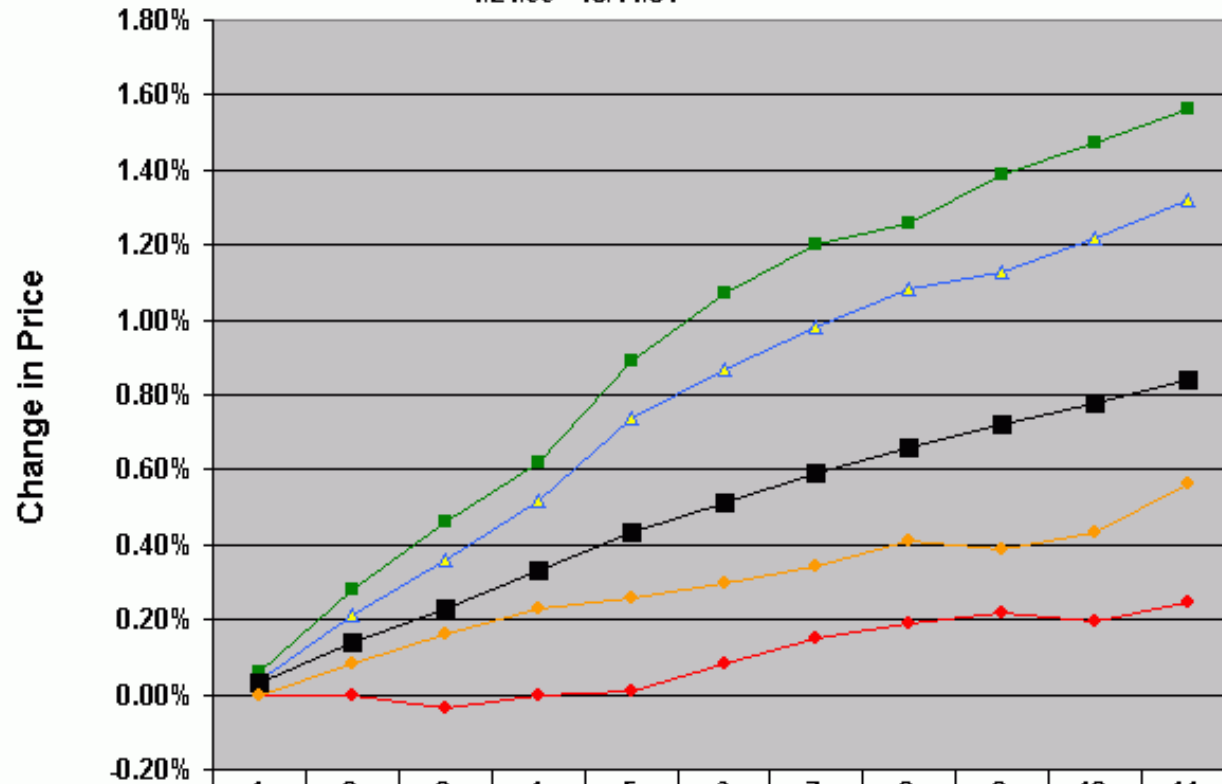
	1	5	10	15	20	25	30	35	40	45	50
◆ Options Rank > 90	-0.12%	-0.10%	0.42%	3.05%	5.71%	7.11%	8.05%	10.35%	9.43%	7.63%	5.74%
■ Options Rank > 70	0.05%	0.65%	1.47%	2.89%	4.00%	4.80%	5.09%	5.50%	5.55%	4.35%	3.62%
▲ Options Rank > 50	2.21%	4.98%	7.44%	10.04%	11.87%	13.15%	13.04%	13.28%	12.17%	11.70%	11.81%
✧ MSFT all the time	-0.02%	-0.20%	-0.41%	-0.43%	-0.38%	-0.32%	-0.30%	-0.26%	-0.13%	0.07%	0.24%
* S&P 500 all the time	0.05%	0.23%	0.40%	0.66%	0.90%	1.15%	1.42%	1.61%	1.87%	2.17%	2.47%
● Options Rank < 51	-0.39%	-1.64%	-4.94%	-8.33%	-9.98%	-9.69%	-9.06%	-8.78%	-7.97%	-4.94%	-4.38%
+ Options Rank < 30	-0.41%	-2.74%	-6.66%	-9.78%	-11.80	-10.16	-9.02%	-9.64%	-9.25%	-7.76%	-6.32%
◆ Options Rank < 10	-1.46%	-7.43%	-10.62	-12.47	-14.60	-13.67	-12.83	-12.24	-11.58	-10.77	-8.90%

Days After Observation

# Erlanger Options Rank

## DJIA Issues Following Options Rank

1/21/99 - 10/14/04



	1	2	3	4	5	6	7	8	9	10	11
Options Rank > 70	0.06%	0.28%	0.46%	0.62%	0.89%	1.07%	1.20%	1.26%	1.39%	1.47%	1.56%
Options Rank > 50	0.04%	0.21%	0.36%	0.52%	0.74%	0.87%	0.98%	1.08%	1.13%	1.22%	1.32%
DJIA Issues all the time	0.03%	0.14%	0.23%	0.33%	0.43%	0.51%	0.59%	0.66%	0.72%	0.78%	0.84%
Options Rank < 51	0.00%	0.00%	-0.04%	0.00%	0.01%	0.08%	0.15%	0.19%	0.22%	0.19%	0.25%
Options Rank < 30	0.00%	0.08%	0.16%	0.23%	0.26%	0.30%	0.34%	0.41%	0.39%	0.43%	0.56%

Days After Observation

# Short-term Trading



# Short-term Trading



# Short-term Trading

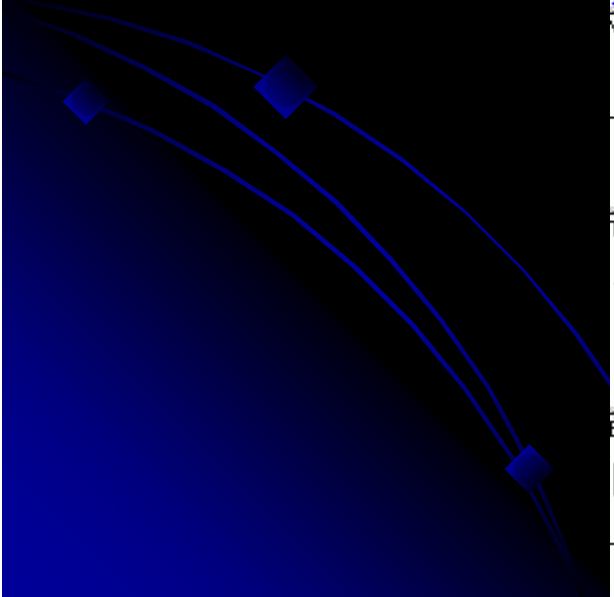
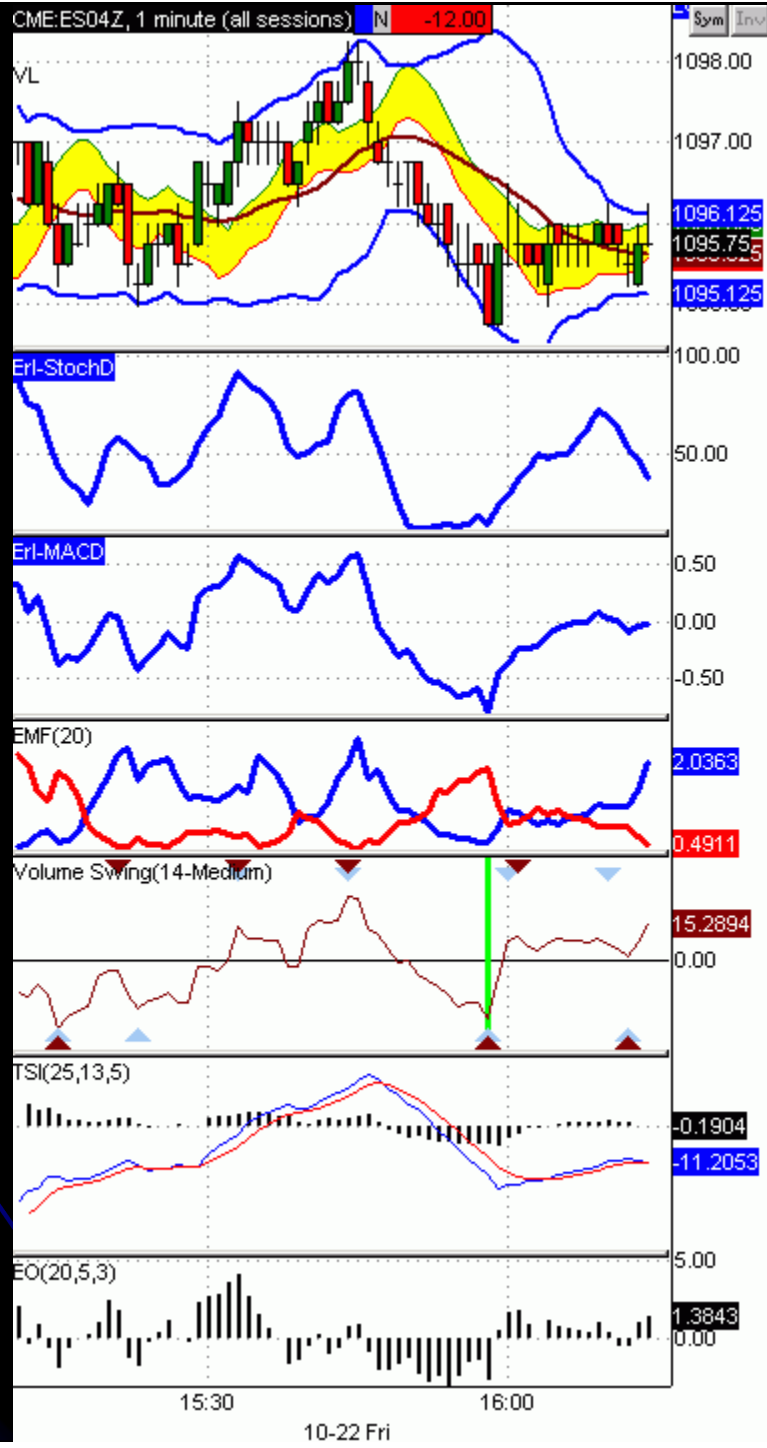


# Short-term Trading



# Short-term Trading





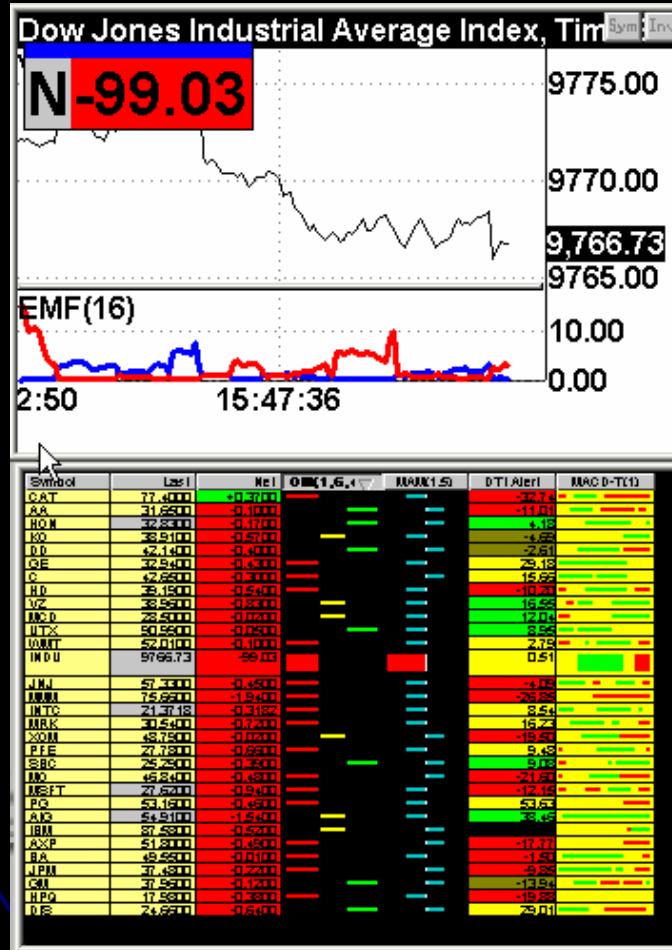
# Short-term Trading

Dow 30 Industrials						
Symbol	Last	Net	DOM(1.6.4)	MAM(1.5)	DTI Alert	MACD-T(1)
CAT	77.3400	+0.3100			-39.28	
AA	31.6600	-0.0900			-15.06	
HON	32.7200	-0.2800			9.74	
KO	38.9000	-0.5800			-3.93	
DD	42.0200	-0.5200			-14.97	
GE	32.9500	-0.4200			6.49	
C	42.5600	-0.3900			-7.05	
HD	39.1700	-0.5600			-23.77	
VZ	38.9700	-0.8200			15.61	
MCD	28.5200	0.0000			19.23	
UTX	91.0000	-0.0400			4.02	
WMT	51.9900	-0.1200			-10.35	
INDU	9757.81	-107.95			-14.76	
JNJ	57.2900	-0.4900			-18.83	
MMM	75.8800	-1.7200			-25.85	
INTC	21.3000	-0.3900			-17.82	
MRK	30.5600	-0.7000			-4.54	
XOM	48.7000	-0.1100			-25.57	
PFE	27.7400	-0.7000			1.00	
SBC	25.2400	-0.4400			6.42	
MO	46.8000	-0.5200			-29.68	
MSFT	27.7400	-0.8200			-8.17	
PG	53.0500	-0.5700			-13.49	
AIG	54.7000	-1.7500			31.64	
IBM	87.3900	-0.7100			-2.87	
AXP	51.7300	-0.5600			-28.25	
BA	49.5100	-0.0500			-18.42	
JPM	37.4700	-0.2300			-37.88	
GM	37.8100	-0.2700			-13.89	
HPQ	17.9400	-0.4200			-37.36	
DIS	24.6200	-0.6800			-10.15	

# Short-term Trading

Symbol	Last	Net	DTI	DTI	DTI	DTI	DTI
CAT	77.3400	+0.3100					-35.28
AA	31.6500	-0.0200					-15.05
HON	32.7200	-0.2800					5.74
KO	38.9000	-0.5500					-1.93
D	42.0000	-0.5000					-14.87
GE	37.9500	-0.4200					5.45
C	42.9500	-0.3500					-7.05
HD	38.1700	-0.5500					-24.77
VZ	38.9700	-0.5000					15.51
WDC	28.5200	0.0000					15.72
UTX	31.0000	-0.0000					4.00
GM	31.5500	-0.1500					-10.25
INTL	37.8781	-1.0755					-14.75
JNJ	57.2500	-0.4500					-18.83
JPM	75.8800	-1.7200					-25.82
JNTO	21.3000	-0.2500					-17.22
MRK	30.5500	-0.7000					-4.54
XOM	48.7000	-0.1000					-25.57
PFE	27.7400	-0.7000					1.00
SBC	26.2400	-0.4500					5.62
NO	45.8700	-0.5000					-25.23
MSFT	27.7400	-0.5000					-8.17
PQ	53.0500	-0.5700					-13.45
AVC	54.7000	-1.7500					-11.54
IBM	37.3500	-0.7000					-2.87
AXP	51.7300	-0.5500					-22.25
BA	48.5100	-0.0500					-18.42
JPM	30.4700	-0.2300					-37.23
GM	37.3100	-0.2000					-13.88
HPQ	17.9400	-0.4200					-37.36
DIS	24.5200	-0.5500					-10.15

# Short-term Trading



[www.ErlangerChartRoom.com](http://www.ErlangerChartRoom.com)

Phil Erlanger Research Co., Inc.  
1 Nagog Park, Acton, MA 01720

[phil@erlanger.com](mailto:phil@erlanger.com)

Tel.: 978-263-2536

Fax: 978-266-1104



[www.ErlangerChartRoom.com](http://www.ErlangerChartRoom.com)

Discount Code = 1004ATL2004

